



Market Street view, showing the glass connector between the Delaware History Museum/Center for African American Heritage and Old Town Hall.



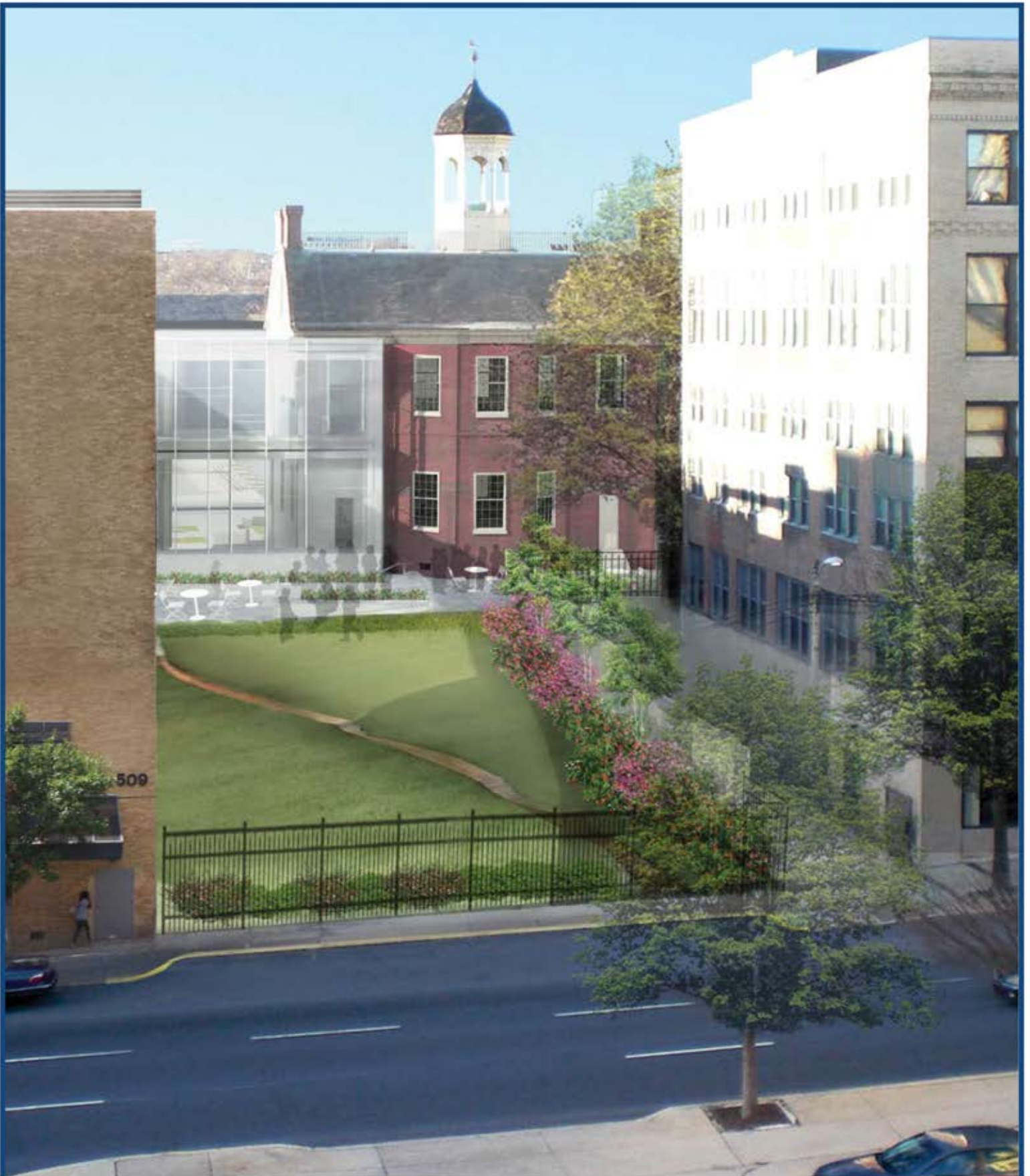
View from exhibition space in Delaware History Museum//Center for African American Heritage looking towards the connector to Old Town Hall, the Terrace Lobby and Gallery, and the Old Town Hall Terrace.



Second floor of the Delaware History Museum, showing the new Second Floor Exhibit Gallery, and the entrance to the Copeland Room beyond.



Interior of the Copeland Room, with a glass wall of the new Visible Storage Gallery beyond.

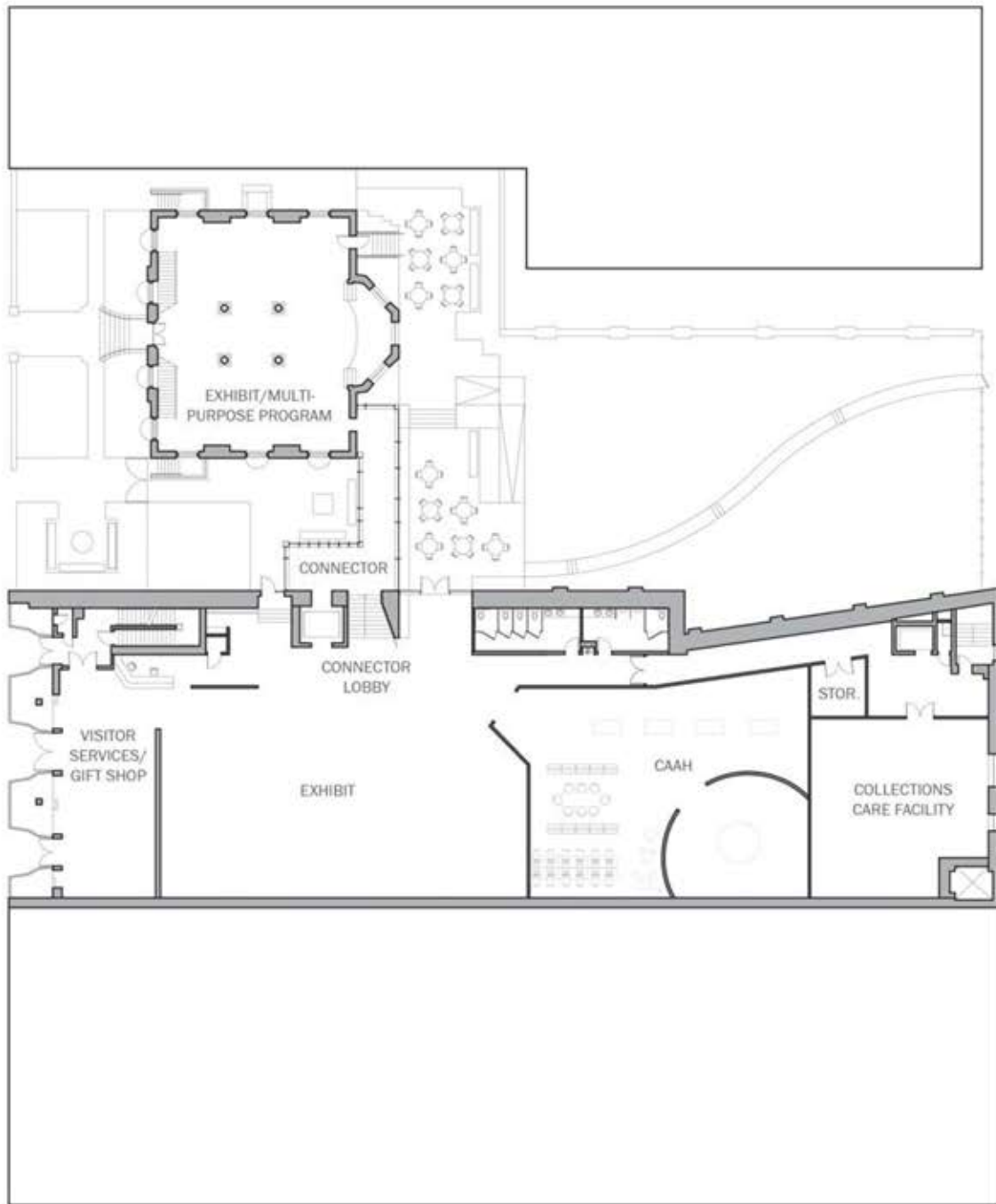


King Street view of the Delaware History Museum and Old Town Hall, the glass connector between them, the Old Town Hall Terrace, and the King Street Gardens.

GROUND FLOOR PLAN

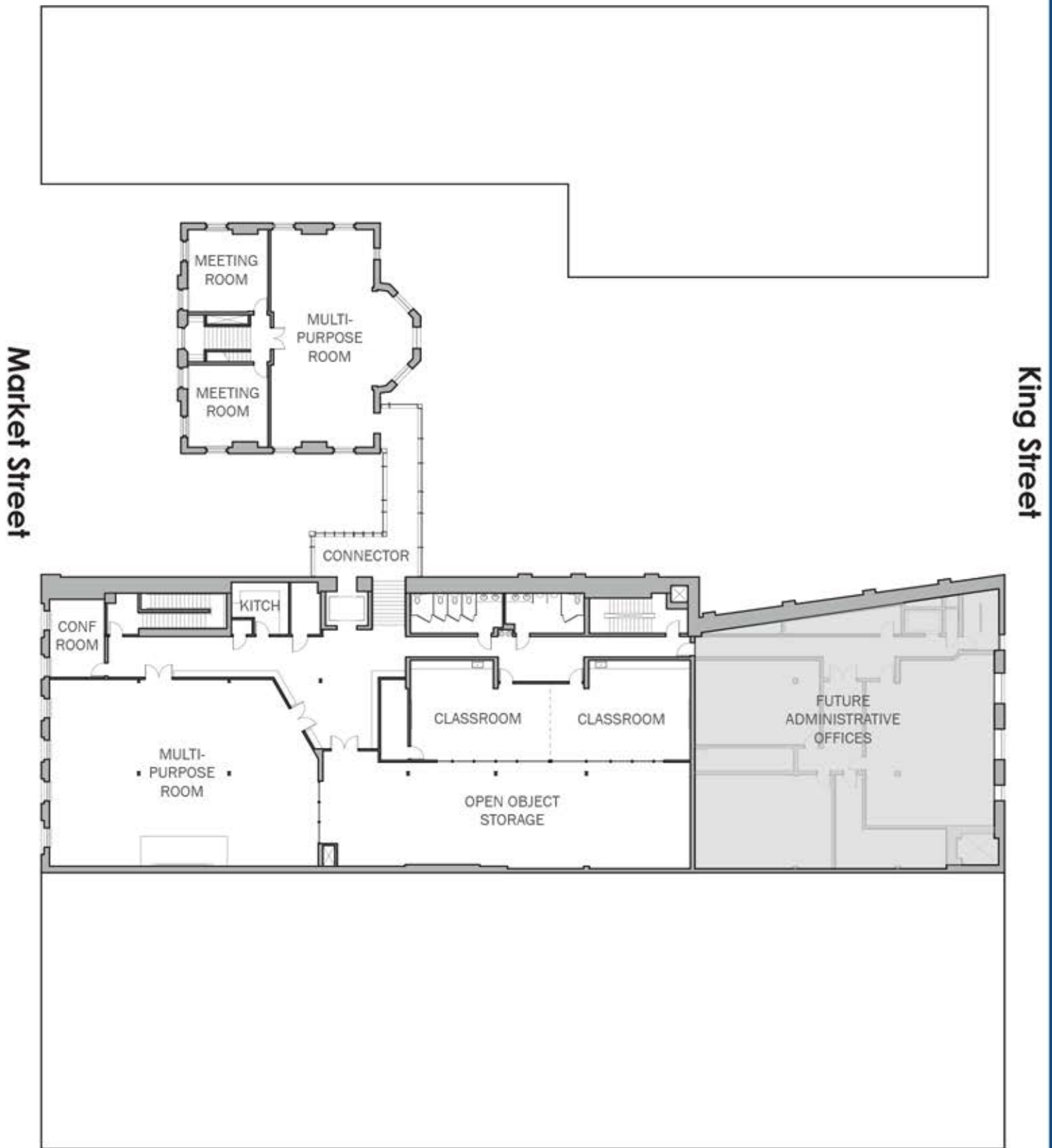
Market Street

King Street



Ground Floor
Delaware History Museum/Center for African American Heritage

SECOND FLOOR PLAN



Second Floor

Delaware History Museum/Center for African American Heritage



Aerial view of the Delaware Historical Society's Wilmington campus, showing Willingtown Square in the foreground and the Research Library to the right, the Delaware History Museum and Old Town Hall in the middle distance, with the proposed glass connector between, and the King Street Gardens towards the rear.